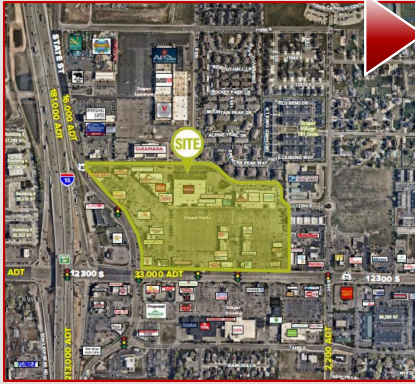


NXTLVL PPM

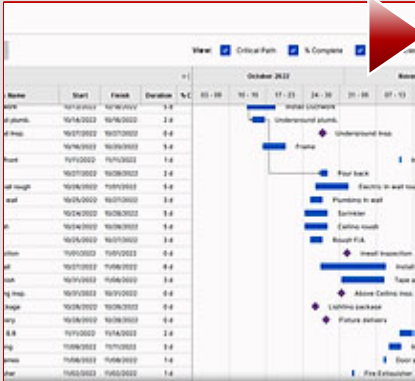
Professional Construction Project Management

“is the art and science of aligning and directing human and material resources across the life of a project; an intentionally planned, choreographed, synchronized and executed series of events **designed to achieve predetermined objectives across scope, cost, timing and quality that when applied against a very complex set of variables turns the risk of chaos and uncertainty into an opportunity for order and predictability.”**



1. Professional Project Management

NXTLVL's involvement begins with site selection, creative & technical design and bid-development. By applying a state-of-the-art graphical take-off system that links take-offs to continuously updated construction cost data and adjusts according to local cost factors throughout the United States. This approach reliably results in super-accurate, actionable, realistic pricing and "should costs" by trade, and work-schedules that can be executed efficiently and reliably.



2. Pro-Active Project Management

NXTLVL's numbers are always accompanied by thoroughly analyzed construction schedules detailed by trade, event and division, including permitting, all forecasted inspections and turnover date, and are available in your choice of formats including Microsoft Project™, Interactive Gantt Chart and/or Excel Spreadsheet. Post-Award, we're focused on managing every point in that schedule to ensure the quality and timely completion of the project to expectation.



3. **Progressive Project Management**

NXTLVL's Clients always know where their projects stand. From Construction Start to Turnover, we produce and deliver weekly Work Planning Reports (WPR's) containing percentage completion statements accompanied by captioned photographs (uploaded daily) for the current week and planned activities for the week ahead.



4. **Pre-emptive Project Management**

Bad news: there could be a problem. Good news: It hasn't happened yet. Here's the Best news: **NXTLVL** will already be ready with **solutions**. Being able to spot potential conflicts and problems before they happen creates the opportunity to present viable, cost-effective options, and decades of real-world, hands-on, in-field experience across a wide array of conditions and situations gives us the foresight and the insight to do exactly that.



5. **Post- Project Management**

After the doors are opened, the place is beautiful and the cash register is cha-chinging, things can still go awry. With **NXTLVL** on your side, all of these issues and more can be handled with a single phone call or email as our team stays on board through the entire warranty period. And beyond. Need a post-warranty period solution? It's highly probable that we've got the sub-base to cover it. Is it Remodel, Re-Set, Re-Brand, Refresh or Re-Purpose time? We've got that covered too.



6. **Personalized Project Management**

When something is "Personalized" it means it's been adapted to fit the needs of a specific individual, or in this case, your organization. **NXTLVL** molds it's business best practices around **your** specific needs and goals, so that working with us is easy for **you**. Moreover, **NXTLVL** project managers adopt a sense of **personal project ownership** to the extent that they see it's success as their own - it's personal, we don't stop until **you** are satisfied, and **that's** Personalized Project Management.

NXT*LVL*
PPM

**“Delivering A Quality Project On-Time, On-Budget
Is Our Reputation”**